

THE MULTI COLLECTION

PBJ
DESIGNHOUSE
1968





Dining table

no 758215 Main table
no 758054 3 x extension leaves 54 cm

Table with spilt in the middle - possibility for 6 extension leaves. All extension leaves can be stored under the tabletop.

L 215/539 W 102 H 75 cm

← 8 - 22 seats →



Galaxy Highboard

no 152093 without light
no 152092 with light

Glass cabinet with 2 glass shelves and LED light, functionality with on/off sensor and dimmer.

L 91 W 45 H 185 cm



Galaxy Highboard

no 152110

Highboard with 3 doors and 3 drawers. One shelf behind each door.

L 110 W 40 H 138 cm

Galaxy with Multi legs



Galaxy Sideboard 3

no 152176

Sideboard with 2 doors and 3 drawers. One shelf behind each door.

L 176 W 45 H 76 cm

The Multi collection

designed by Morten Svendsen

The Multi dining table with rounded, tapered solid legs can accommodate up to 6 extension leaves, all of them can be stored under the table top. So you don't have to store the many plates elsewhere. This makes it easy to extend the table when guests arrive or when many people gather. With three extension leaves, the table can be extended to 377 cm to accommodate 12 chairs and with 6 extension leaves it can be extended to 539 cm to accommodate 20 - 22 people. When extending the table, the legs are split in half so that the inner leg section remains in its centre position.

Galaxy cabinets are available with matching Multi legs and fronts in the striking Intarsia veneer, straight veneer or various laminates in a wide range of colours to match the table top. The sideboards have the same design element as the table, with a solid wood detail at the top of each leg

All cabinets are also beautifully veneered at the back, which means they can be free standing.



Other legs are available - please ask the store staff.



Galaxy 3XL Sideboard

no 152178

Sideboard with 3 doors and 1 drawer. One large shelf behind 2 doors, 1 shelf behind 1 door.

L 176 W 45 H 90 cm



Galaxy 4XL Sideboard

no 152233

Sideboard with 4 doors and 2 drawers. One large shelf in each side behind 2 doors.

L 233 W 45 H 90 cm





Up to 22 seats

6 extension leaves can be stored
under the tabletop

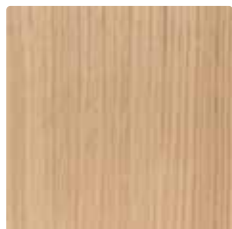
Hidden metal legs

Molti collection, Mastik chair in light oak lacq.

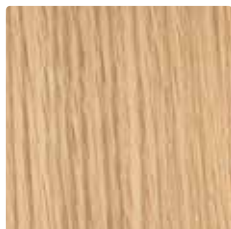
Colours and materials

Multi Collection are available in different types of wood finishes. The tabletop and fronts are also available in a wide range of laminate in different colours and surfaces. You can find samples in your local store.

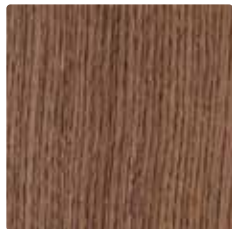
WOOD FOR MULTI TABLE



043 Light oak lacq

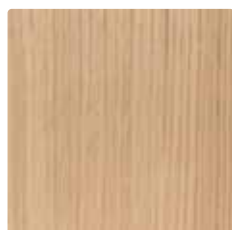


045 Oak natura lacq

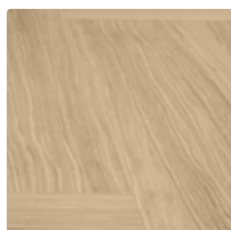


047 dark oak lacq

WOOD FOR GALAXY SIDEBOARDS



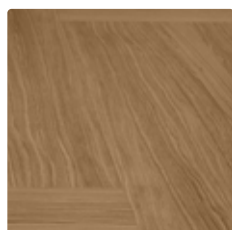
043 Light oak lac



43040 Light oak lacq intarsia



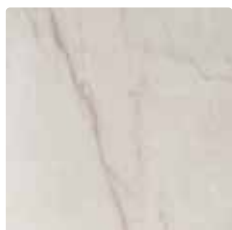
075 Walnut oil



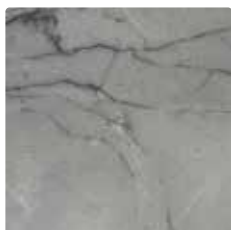
75070 Walnut oil intarsia

LAMINATE

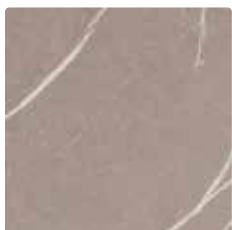
MARBLE



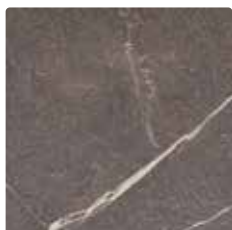
301 Yule white



302 Yule grey

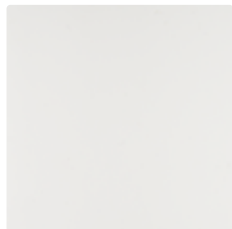


303 Pulpis light



304 Pulpis dark

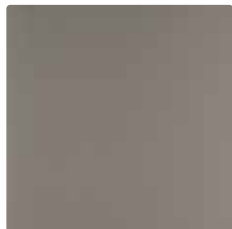
FENIX



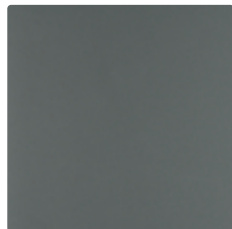
201 Bianco white



204 Deep black



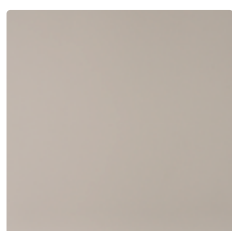
210 Dark warm grey



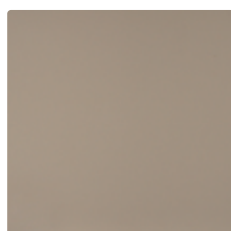
219 Verde



222 Grigio



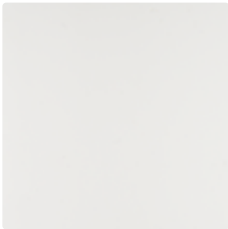
206 Light grey



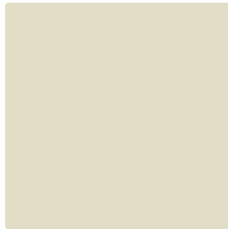
207 Grey brown



HPL (HIGH PRESSURE LAMINATE)



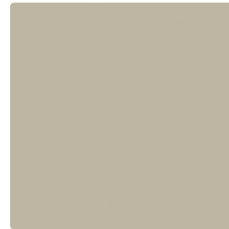
101 White



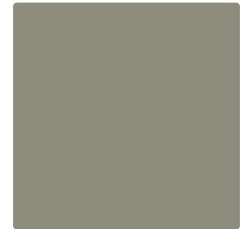
102 Pomice



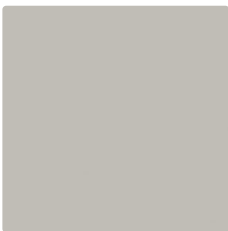
103 Otter



104 Oyster Grey



105 Possum



106 Iron



184 Nero Stone

See pbjdesignhouse.com or price list for availability of specific products.

The paper used for this brochure is FSC® certified.

Home is a place to belong.
Filled with love, harmony, joy ... being you.

Proud craftsmanship with a critical
eye for design and quality.

A family-owned Danish company with our own
production company. We have many years of experience in
refining the details and meeting the customers' requirements.

DANISH DESIGN SINCE 1968



PBJ Designhouse
Skovvænget 2
DK-7860 Spøttrup
Denmark

pbj@pbjdesignhouse.com
pbjdesignhouse.com

Your specialist dealer:

The brochure is subject to technical changes and possible printing errors.