

**PBJ**  
DESIGNHOUSE  
1968

# THE NAVIS COLLECTION



# The Navis collection

*designed by Morten Svendsen*

The Navis dining table with its modern, classic design has a hidden pull-out leaf at both ends of the table for easy extension. The nicely curved tabletop with solid edges comes in a variety of wooden finishes as well as hard-wearing laminates in a wide choice of colours. As an extra design feature the oak version has a solid walnut insert at the top of the legs and on the walnut version this insert will be solid oak.

The Oculus range of sideboards, highboards and display cabinets, can also be ordered with matching Navis legs, the cabinets are veneered with rounded solid edges and mitre joints. Doors and drawers are with nicely recessed oval handles. All cabinets are also beautifully veneered at the back, so they can be free standing as well.



Morten Svendsen, owner of PBJ

Enjoy.



NAVIS Table, Tonus chair in light oak lacq.

Frontpage: Navis collection, Titan chair in oak natural lacq..



**Dining table**  
no 726092

Dining table with pull-out leaf in each end. 4-6 seats, extended 6-8 seats.

L 92/152 W 85 H 75 cm



**Dining table**  
no 726132

Dining table with pull-out leaf in each end. 6-10 seats, extended 10-14 seats.

L 132/232 W 86 H 75 cm



**Dining table**  
no 726153

Dining table with pull-out leaf in each end. 6-10 seats, extended 10-14 seats.

L 153/253 W 87 H 75 cm



NAVIS Table, Cor chair , Oculus cabinets in light oak lacq.

# Oculus with Navis legs



## Oculus Glass Cabinet

no. 138093 with light  
no. 138094 without light

Glass cabinet with 2 glass shelves and LED light, controlled with on/of sensor and dimmer.

L 91 W 45 H 185 cm



## Oculus Highboard

no 138110

Highboard with 3 doors and 3 drawers. 1 shelf behind each door.

L 110 W 40 H 138 cm



## Oculus Sideboard

no 138120

Sideboard with 1 door and 3 drawers. 1 shelf behind the door.

L 118 W 45 H 75 cm



Oculus 3'XL Sideboard with Navis legs in light oak lacq..



**Oculus Sideboard**

no 138176

Sideboard with 2 doors and 3 drawers. 1 shelf behind each door.

L 176 W 45 H 75 cm



**Oculus XL Sideboard**

no 138234

Sideboard with 4 doors and 2 large drawers. 1 long shelf behind each 2 doors.

L 233 W 45 H 90 cm



**Oculus Sideboard**

no 138233

Sideboard with 3 doors and 3 drawers. 1 shelf behind each door.

L 233 W 45 H 75 cm



**Oculus XL Sideboard**

no 138235

Sideboard with 4 doors. 1 long shelf behind each 2 doors.

L 233 W 45 H 90 cm



**Oculus XL Sideboard**

no 138178

Sideboard with 3 doors and 1 long drawer. 1 long shelf behind 2 doors, 1 shelf behind 1 door.

L 176 W 45 H 90 cm

Other leg designs are available - please ask the sales staff for details.



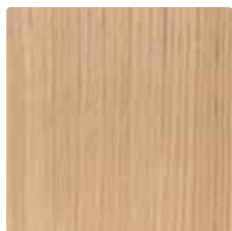
Oculus glass cabinet with Navis legs in light oak lacq.

# Colours and materials

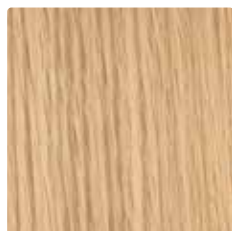
The Navis collection is available in a variety of wood finishes. The tabletops and sideboard/highboard fronts are also available in a wide range of laminates in different colours. \*Walnut oil is only available for sideboard/highboard.

## WOOD

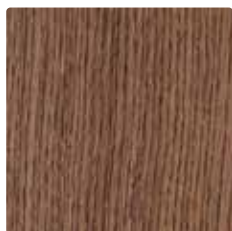
### VENEER



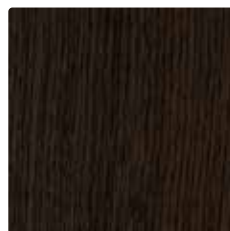
043 Light oak lacq



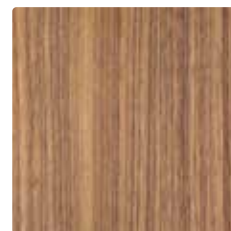
045 Oak natural lacq



047 Dark oak lacq



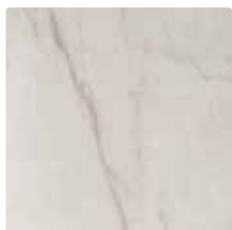
049 Smoked oak lacq



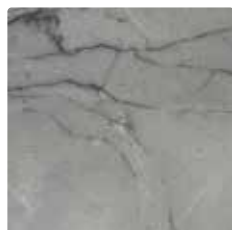
\*075 Walnut oil

## LAMINATE

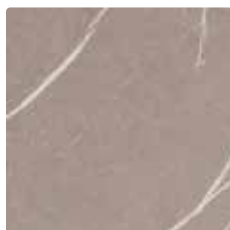
### MARBLE



301 Yule white



302 Yule grey

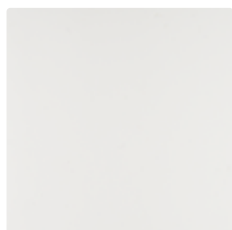


303 Pulpis light



304 Pulpis dark

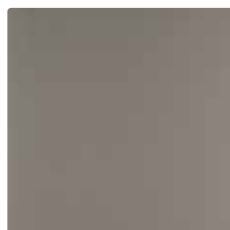
### FENIX



201 Bianco white



204 Deep black



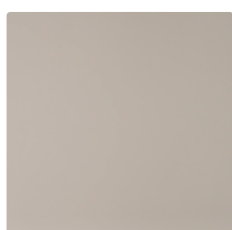
210 Dark warm grey



219 Verde



222 Grigio



206 Light grey

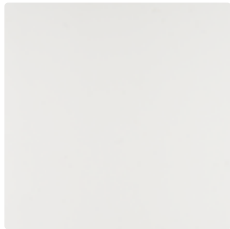


207 Grey brown

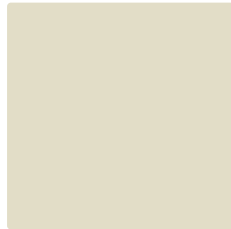


Beautiful Navis detail.

HPL (HIGH PRESSURE LAMINATE)



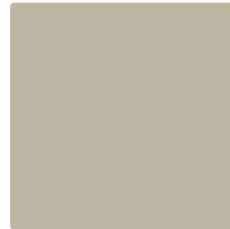
101 White



102 Pomice



103 Otter



104 Oyster Grey



105 Possum



106 Iron

See [pbjdesignhouse.com](http://pbjdesignhouse.com) or price list for availability of specific products.

The paper used for this brochure is FSC® certified.

Home is a place to belong.  
Filled with love, harmony, joy ... being you.

---

Proud craftsmanship with a critical  
eye for design and quality.

A family-owned Danish company with our own  
production company. We have many years of experience in  
refining the details and meeting the customers' requirements.

DANISH DESIGN SINCE 1968



**PBJ Designhouse**  
Skovvænget 2  
DK-7860 Spøttrup  
Denmark

[pbj@pbjdesignhouse.com](mailto:pbj@pbjdesignhouse.com)  
**[pbjdesignhouse.com](http://pbjdesignhouse.com)**

Your specialist dealer:

*The brochure is subject to technical changes and possible printing errors.*